



Mining Investments Opportunities in Egypt

Dr. Tamer Abubakr
Chairman of Egyptian
petroleum & Mining Chamber

June 2022

The Mining Industries Phases



- Egypt's total mining ore extraction value in 2018 reached 5.2 billion \$, Iron accounts for 50%, Phosphate 28%, Aluminum 11%, Precious metal gold 11%.
- Regardless International Experts were always assuring that Egypt has the most efficient and effective exploration opportunities.
Egypt has a lot of undiscovered reserves.

- ❑ The industry had been for long facing significant challenges and the new law and regulation had addressed.
- ❑ The political regime is highly convinced with the significance of developing the mineral resources wealth sector within an integrated national strategy for exploration, exploitation and mineral added value manufacturing .
- ❑ The Government has taken major steps to attract large exploration companies and junior exploration investors as they are the venture capital arm of the mining industry.

The new Mining Era in Egypt

- Consistency, Transparency, Safety, Stability and Environmental aspects have been considered as the main outline for the new agreements and regulations during the upcoming phase.
- A complete reformation and modernization for the mining sector for legislation to be in line with international norms, structure and human resources with the assistance of one of the international consultants in the field (Wood Mackenzie).
- The new mining reformation provision is to encourage the development of value-added industries that take advantage of the country's mineral wealth.

Minerals & Ores available in Egypt

There are at least 27 mineral ores of high interest as it characterized by its deposits and its purities rather than its variable applications and uses In industry sector in Egypt

		Mineral/Metal	Royalty	Reserves	E. Desert	W. Desert	sinai
Precious, Energy & Earth	1	Gold	5%	120 milion ounce	●		
	2	Ornamental Stones	5%	Great Reserves	●	●	●
	3	Niobium & Tantalum		120 milion ton	●		
	4	Oil Shale		5.7 bilion barel	●	●	
Non Metallic	5	Phosphate	9%	4000 milion Ton	●	●	
	6	Potash		6 milion Ton	●		
	7	Sulfur		3milion Ton	●		●
Iron & Ferrous Metals	8	Iron Ore	8%	1000 milion. Ton	●	●	●
	9	Manganese	7%	Need more Investigation	●		●
	10	Ilmenite	9%	43 milion. Ton	●	●	●
	11	Vanadium	8%	Need more Investigation	●	●	
	12	Nickel		0.5 milion ton Need more Investigation	●		
	13	Chromite	8%	2000-5000 Ton	●		
	14	Tungsten	9%	1.5 milion ton Need more Investigation	●		●
	15	Molybdenum		Need more Investigation	●		

		Mineral/Metal	Royalty	Reserves	E. Desert	W. Desert	sinai
Non Ferrous Metals	16	Cooper	8%	0.25 milion ton eed more Inv	●		●
	17	Lead	6%	1.50 milion ton eed more Inv	●		
	18	Zinc	6%	1.0 milion ton	●		
	19	Tin	9%	5.2 milion ton	●		
Other Industry Minerals	20	Fluorspar	5%	2.0 milion ton	●		
	21	Barite	8%	2.5 milion ton	●		●
	22	Bentonite	8%	1000 milion Ton	●	●	
	23	Mica	5%	2.3 milion ton	●		●
	24	Black Sand		790 milion ton			●
	25	Feldspars	8%	1000-3000 Ml. Ton	●		●
	26	Quartz	7%	120 milion. Ton	●		
	27	Glass Sand	18%	5 Trilion Ton			●

- ❑ Population over 100 million with an increase of 2.4% yearly.
- ❑ National Growth rate is 5.5% targeting 6 - 7%
- ❑ The Industry sector is one of the main pillar for the growth development.
- ❑ Egyptian industry sector Import 60% of its needs from mineral raw material .
- ❑ Egypt will need to build 5-10 thousand factory yearly during the next 10 years.
- ❑ The Egyptian Industry sector is in need for a lot of mineral resources.
- ❑ Sufficient resources of energy Oil, Gas, Electricity.

- ❑ Thousands of qualified Geologist, geophysics, Chemistries Graduate every year from 21 universities Since collage.
- ❑ Hundreds of qualified petroleum & mining Surveyors, Engineer Graduate every year from 4 universities Engineering collage.
- ❑ Availability of experience contractors supplying all the mining services such as (drilling, surveying, explosives, paving desert tracks, production, crushing, milling and grinding).

- ❑ An information documentation center established since 1896 Including all the geologic report about the main mineralogical environment in Egypt.
- ❑ All the geophysical data including digital magnetic data, digital gravity data, radiometric data.
- ❑ The Egyptian desert characterized by a bare land and clear geologic setting.
- ❑ Experts expected in 10 Year Five gold mines similar to Sukkari along with 100 medium to small mines.

Available resources for Mining in Egypt

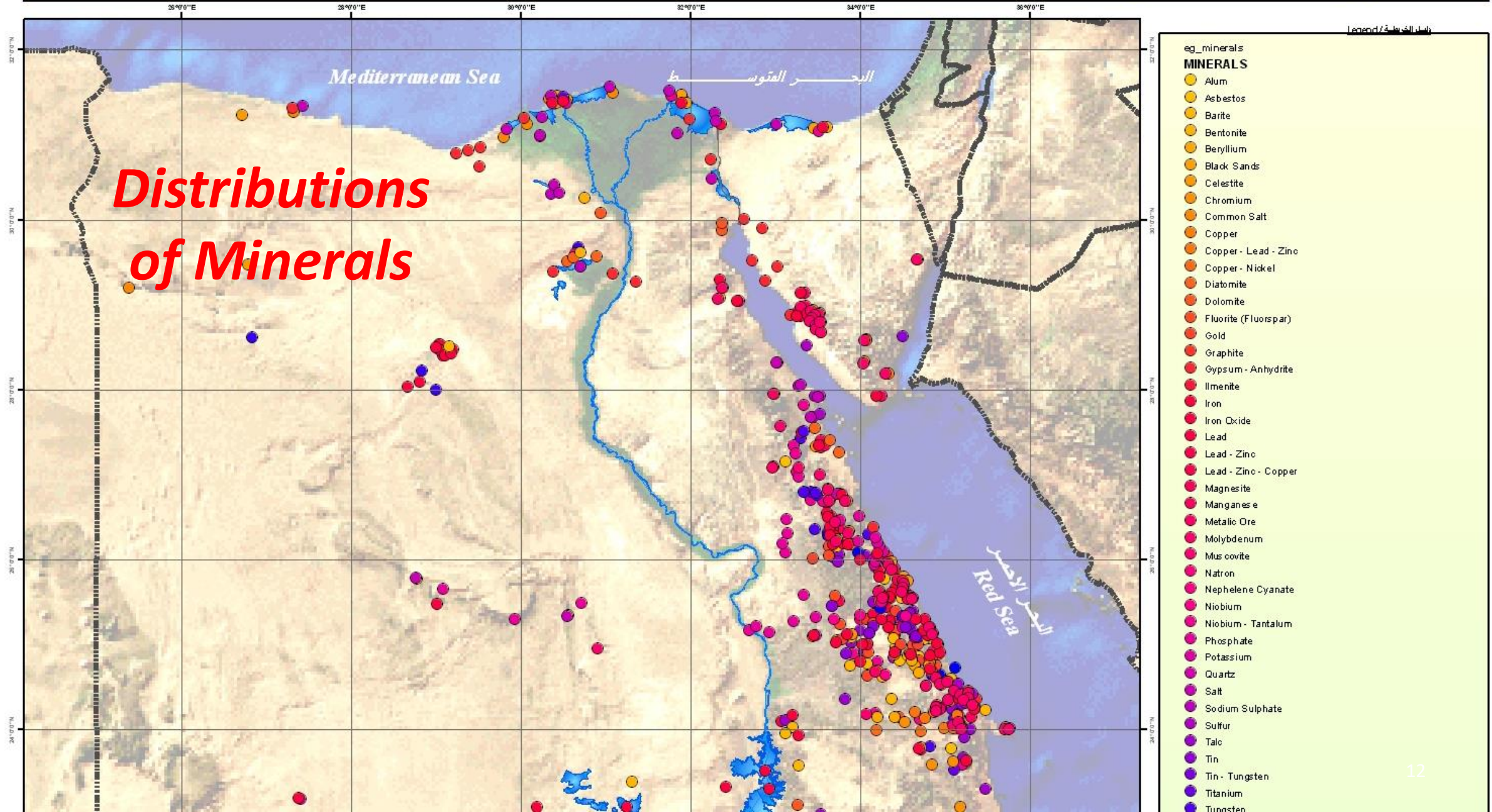
One of the most important comparative advantages of Egypt is the existence of a modern infrastructure of roads, transportation, communications, ports and availability of Energy .

- ❖ 4500 km. of new roads had been established on two phases 3 billion US\$.
- ❖ 3000 km. is under construction as part of the third phase 2 billion US\$.
- ❖ The length of the road network is planned to reach 30.5 thousand km.
- ❖ Mega project to improve the railway's system.
- ❖ Mega project to improve the Ports.

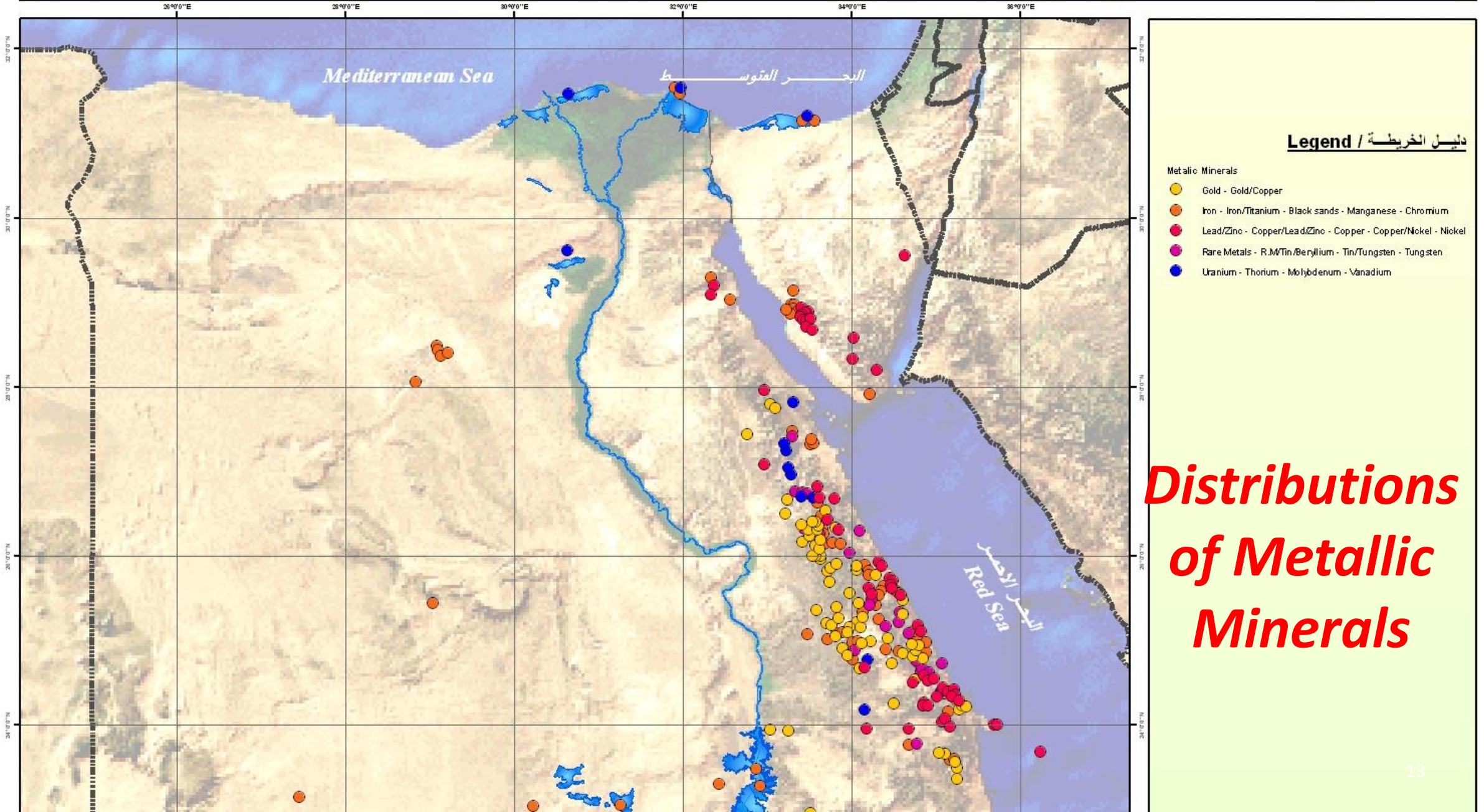


Available resources for Mining in Egypt

- 1) Distribution of Metal, Non metallic, Industrial, Building material And queries maps.
- 2) Geologic structural maps for east & west desert and sina.
- 3) Geologic map at different scales up to scale 1 to 50,000.
- 4) Digital Mineral resources Metalorganic, Hydrology and Soil maps for metals ,non metallic and industrial metals.
- 5) Natural hazard maps (Floods, Earthquakes, Active faults, Rock failure, Shore corrosion, Sand dune movements).
- 6) Present and proposed mining centers.
- 7) Drainage of surface water and torrents maps , Natural Reserves maps.
- 8) Agricultural and tourism activities maps, and water wells maps.
- 9) Present and proposed industrial zones, New cities maps, Country used land map.
- 10) New Urban Communities map, Potentialities & Priorities of Development areas maps.
- 11) Existing & proposed Roads, Airport, harbors and logistic centers Maps.

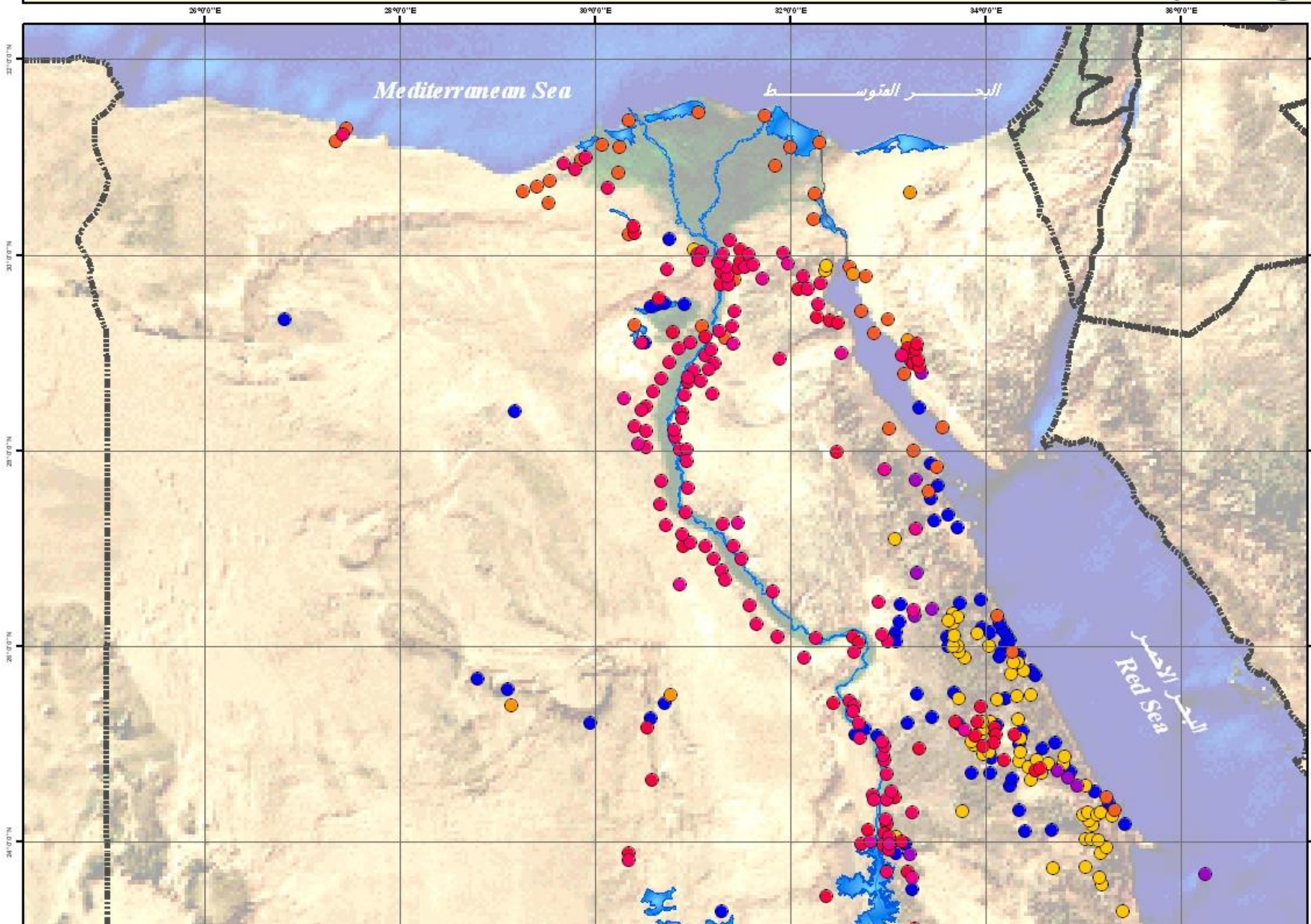


توزيعات المعادن الفلزية



**Distributions
of Metallic
Minerals**

توزيعات المعادن اللافلزية



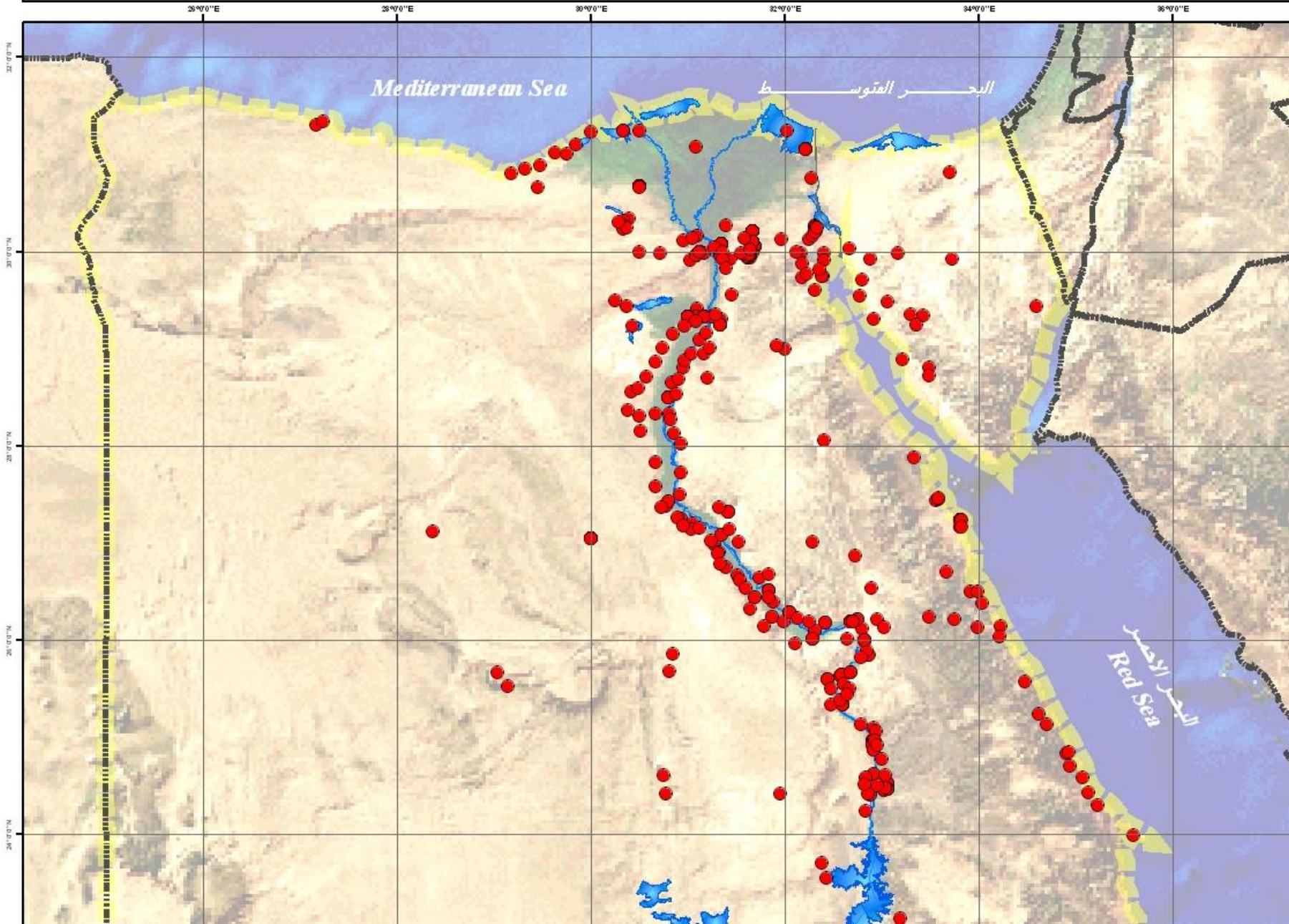
Legend / دليل الخريطة

Non-Metallic Minerals

- Yellow circle: Asbestos - Vermiculite - Talc - Graphite - Magnesite - Dolomite - Gypsum
- Orange circle: Coal deposits and carbonaceous shale
- Red circle: Common salt - Rock salt - Potassium salt - Nitron - Gypsum
- Pink circle: Feldspar - Potash - Kaolin/clay - Gyps - White sand - Quartz
- Light pink circle: Limestone - Sandstone - Basalt
- Magenta circle: Nepheline - Albaster - Granite - Serpentine - Peridotite - Bauxite
- Purple circle: Phosphate - Emerald - Turquoise - Amethyst
- Blue circle: Precious - Placer - Beryl - Sphur - Boronite - Diamond - Neohelios syrite - Colophonitrenthum - Alum

**Distributions
of Non
Metallic
Minerals**

مواد البناء



دليل الخريطة / Legend

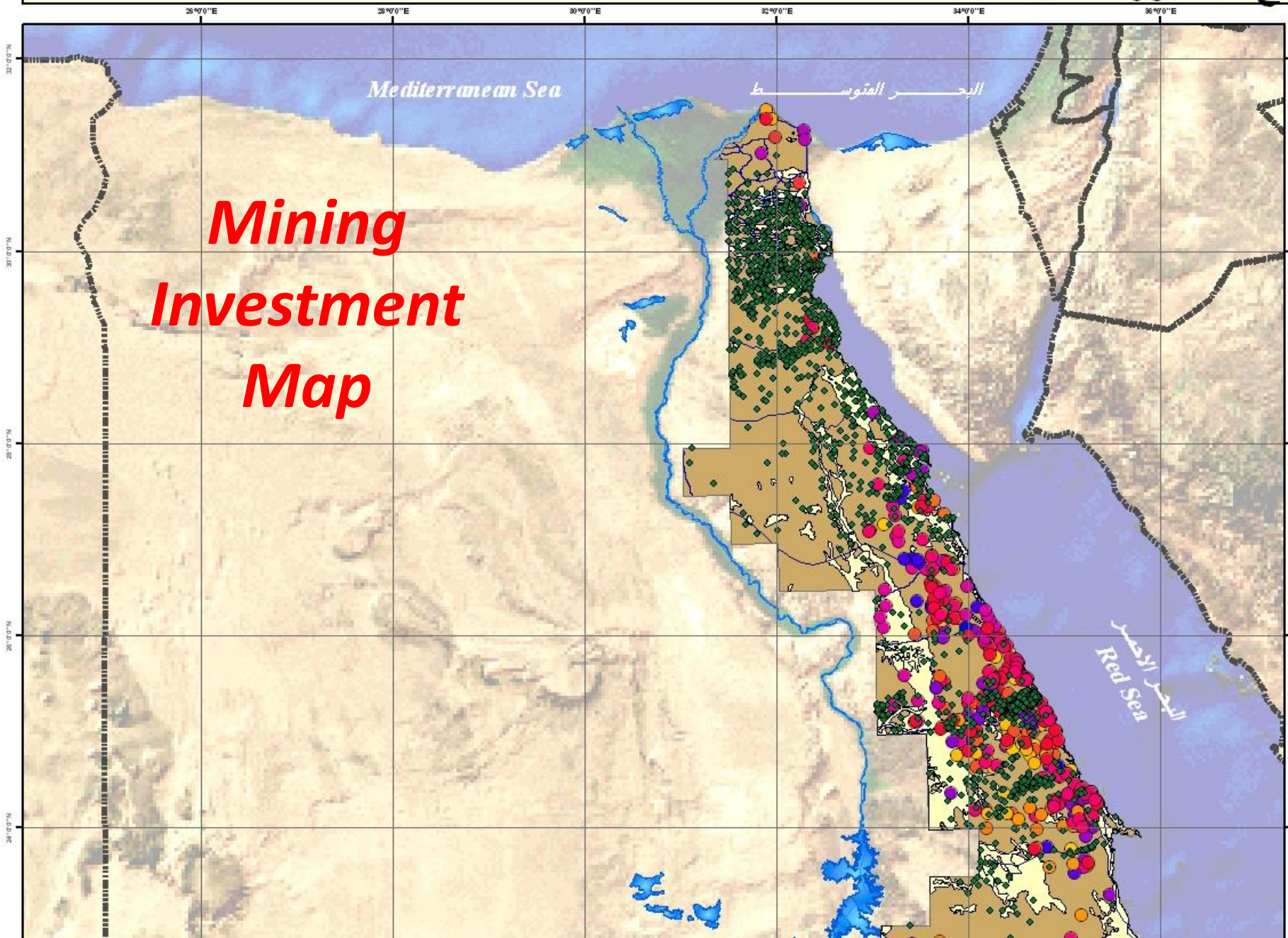
● مواد البناء

**Building
Materials**

قطاع التعدين مع محاور التنمية

Legend / الخريطه

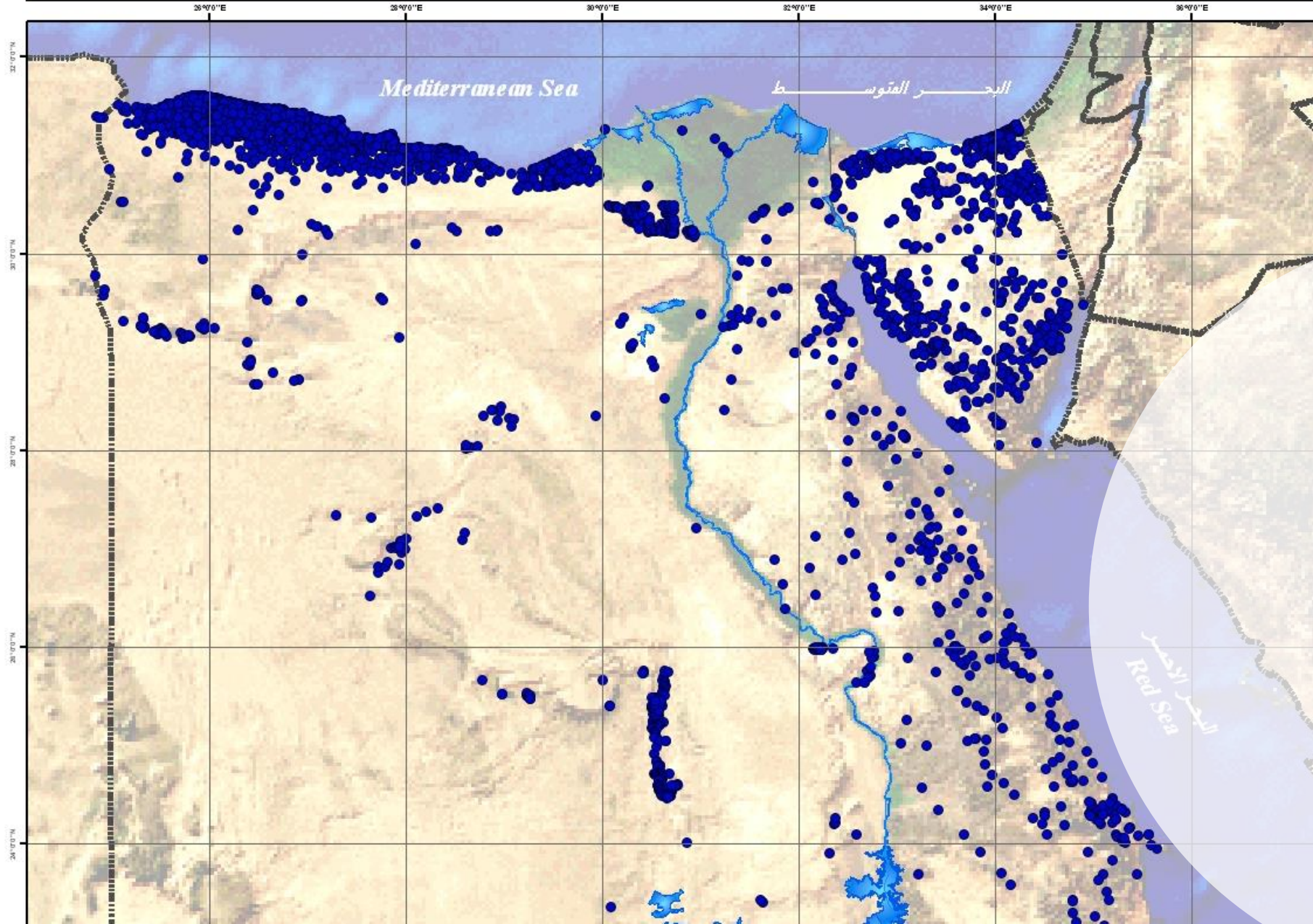
Mining Investment Map



- MINEALS**
- Adobe
 - Barite
 - Beryllium
 - Black Sands
 - Celestite
 - Chromium
 - Copper
 - Copper-Lead-Zinc
 - Copper-Nickel
 - Dolomite
 - Fluorite (Fluorspar)
 - Gold
 - Graphite
 - Gypsum-Anhydrite
 - Ilmenite
 - Iron
 - Iron Oxide
 - Lead
 - Lead-Zinc
 - Lead-Zinc-Copper
 - Magnesite
 - Manganes
 - Metallic Ore
 - Molybdenum
 - Muscovite
 - Nepheline Syanate
 - Niobium
 - Niobium-Tantalum
 - Placoplate
 - Potassium
 - Quartz
 - Salt
 - Sulfur
 - Talc
 - Tin
 - Tin-Tungsten
 - Titanium
 - Tungsten
 - Uranium-Thorium-Molybdenum-Vanadium
- roads_ed
— contour_ed

مشروع دعم القدرات-هيئة الثروة المعدنية

ابار المياه



دليل الخريطة / Legend

1
8

ابار المياه ●

**Water
Wells**

Proposed Industrial Zones

المناطق الصناعية المقترحة



Legend / دليل الخريطة

- Capital / عاصمة ○
- Main cities / مدن رئيسية ●
- International boundary / حدود دولية
- Nile River / نهر النيل
- Lakes / البحيرات
- Land Agricultural / الأراضي الزراعية
- Proposed Industrial Zones / المناطق الصناعية المقترحة
- Roads Network / شبكة الطرق
- Highway / طريق سريع
- Primary road / طريق رئيسي
- Paved track / سكة حديدية
- Unpaved track / سكة حديدية غير مغطاة
- Development Corridor / محور التنمية والتنمية
- Branches / الفروع

New Industrial Zone

Proposed Urban Communities



Legend / دليل الخريطة

- Development Corridor / محور التنمية العمرانية
- Proposed Urban Communities / التجمعات العمرانية المقترحة
- Urban Communities / التجمعات العمرانية
 - Capital / القاهرة
 - Main Cities / مدن رئيسية
 - Small Villages / قرى صغيرة
 - New Towns / مدن جديدة
 - New Towns 2 / مدن جديدة 2
 - New Towns 3 / مدن جديدة 3
 - New Towns 4 / مدن جديدة 4
 - New Towns 5 / مدن جديدة 5
 - New Towns 6 / مدن جديدة 6
 - New Towns 7 / مدن جديدة 7
 - New Towns 8 / مدن جديدة 8
 - New Towns 9 / مدن جديدة 9
 - New Towns 10 / مدن جديدة 10
 - New Towns 11 / مدن جديدة 11
 - New Towns 12 / مدن جديدة 12
 - New Towns 13 / مدن جديدة 13
 - New Towns 14 / مدن جديدة 14
 - New Towns 15 / مدن جديدة 15
 - New Towns 16 / مدن جديدة 16
 - New Towns 17 / مدن جديدة 17
 - New Towns 18 / مدن جديدة 18
 - New Towns 19 / مدن جديدة 19
 - New Towns 20 / مدن جديدة 20
 - New Towns 21 / مدن جديدة 21
 - New Towns 22 / مدن جديدة 22
 - New Towns 23 / مدن جديدة 23
 - New Towns 24 / مدن جديدة 24
 - New Towns 25 / مدن جديدة 25
 - New Towns 26 / مدن جديدة 26
 - New Towns 27 / مدن جديدة 27
 - New Towns 28 / مدن جديدة 28
 - New Towns 29 / مدن جديدة 29
 - New Towns 30 / مدن جديدة 30
 - New Towns 31 / مدن جديدة 31
 - New Towns 32 / مدن جديدة 32
 - New Towns 33 / مدن جديدة 33
 - New Towns 34 / مدن جديدة 34
 - New Towns 35 / مدن جديدة 35
 - New Towns 36 / مدن جديدة 36
 - New Towns 37 / مدن جديدة 37
 - New Towns 38 / مدن جديدة 38
 - New Towns 39 / مدن جديدة 39
 - New Towns 40 / مدن جديدة 40
 - New Towns 41 / مدن جديدة 41
 - New Towns 42 / مدن جديدة 42
 - New Towns 43 / مدن جديدة 43
 - New Towns 44 / مدن جديدة 44
 - New Towns 45 / مدن جديدة 45
 - New Towns 46 / مدن جديدة 46
 - New Towns 47 / مدن جديدة 47
 - New Towns 48 / مدن جديدة 48
 - New Towns 49 / مدن جديدة 49
 - New Towns 50 / مدن جديدة 50
 - New Towns 51 / مدن جديدة 51
 - New Towns 52 / مدن جديدة 52
 - New Towns 53 / مدن جديدة 53
 - New Towns 54 / مدن جديدة 54
 - New Towns 55 / مدن جديدة 55
 - New Towns 56 / مدن جديدة 56
 - New Towns 57 / مدن جديدة 57
 - New Towns 58 / مدن جديدة 58
 - New Towns 59 / مدن جديدة 59
 - New Towns 60 / مدن جديدة 60
 - New Towns 61 / مدن جديدة 61
 - New Towns 62 / مدن جديدة 62
 - New Towns 63 / مدن جديدة 63
 - New Towns 64 / مدن جديدة 64
 - New Towns 65 / مدن جديدة 65
 - New Towns 66 / مدن جديدة 66
 - New Towns 67 / مدن جديدة 67
 - New Towns 68 / مدن جديدة 68
 - New Towns 69 / مدن جديدة 69
 - New Towns 70 / مدن جديدة 70
 - New Towns 71 / مدن جديدة 71
 - New Towns 72 / مدن جديدة 72
 - New Towns 73 / مدن جديدة 73
 - New Towns 74 / مدن جديدة 74
 - New Towns 75 / مدن جديدة 75
 - New Towns 76 / مدن جديدة 76
 - New Towns 77 / مدن جديدة 77
 - New Towns 78 / مدن جديدة 78
 - New Towns 79 / مدن جديدة 79
 - New Towns 80 / مدن جديدة 80
 - New Towns 81 / مدن جديدة 81
 - New Towns 82 / مدن جديدة 82
 - New Towns 83 / مدن جديدة 83
 - New Towns 84 / مدن جديدة 84
 - New Towns 85 / مدن جديدة 85
 - New Towns 86 / مدن جديدة 86
 - New Towns 87 / مدن جديدة 87
 - New Towns 88 / مدن جديدة 88
 - New Towns 89 / مدن جديدة 89
 - New Towns 90 / مدن جديدة 90
 - New Towns 91 / مدن جديدة 91
 - New Towns 92 / مدن جديدة 92
 - New Towns 93 / مدن جديدة 93
 - New Towns 94 / مدن جديدة 94
 - New Towns 95 / مدن جديدة 95
 - New Towns 96 / مدن جديدة 96
 - New Towns 97 / مدن جديدة 97
 - New Towns 98 / مدن جديدة 98
 - New Towns 99 / مدن جديدة 99
 - New Towns 100 / مدن جديدة 100
- Proposed Roads / طرق مقترحة
- Highways / طرق سريعة
- Major Roads / طرق رئيسية
- Local Roads / طرق محلية
- Urban Roads / طرق حضرية

New Urban Communities

Existing and Proposed Roads Network

شبكة الطرق القائمة والمقترحة



Legend / دليل الخريطة

- عاصمة محافظات / Capital
- مدن رئيسية / Main cities
- ⊕ مفاتيح / Gateway
- ▬ ممر التنمية والتعمير / Development Corridor
- ▬ التمايز العرضية / Branches
- ▬ شبكة الطرق / Roads Network
- ▬ طريق سريع / Highway
- ▬ طريق رئيسي / Primary road
- ▬ مغطاة بمسحوق / Paved track
- ▬ مغطاة غير مسحوق / Unpaved track
- ▬ تم التنفيذ / Completed
- ▬ طريق تحت التنفيذ / Under Construction
- ▬ طريق تحت الدراسة / Under Study

Existing & Proposed Roads

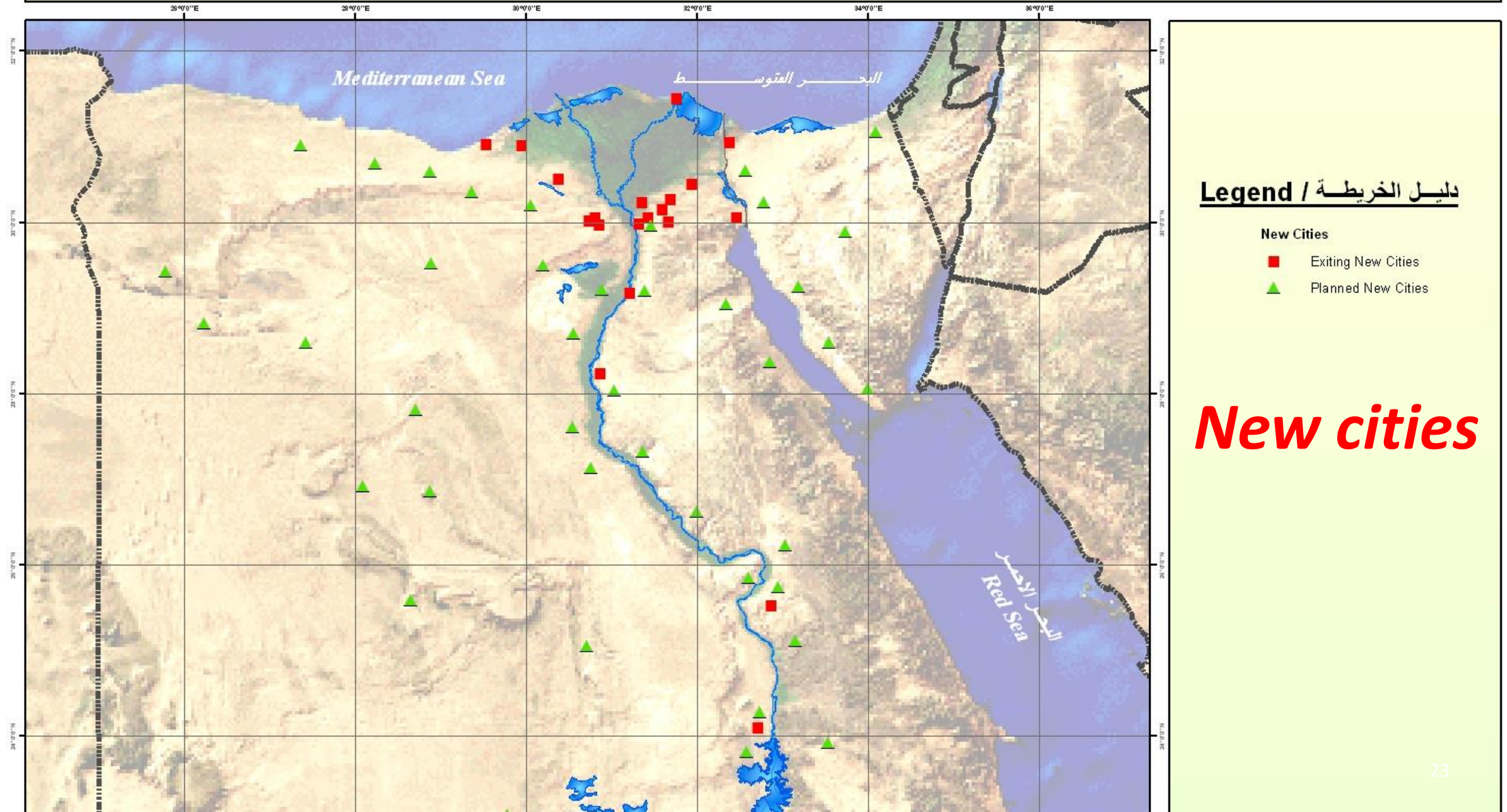


Legend / دليل الخريطة

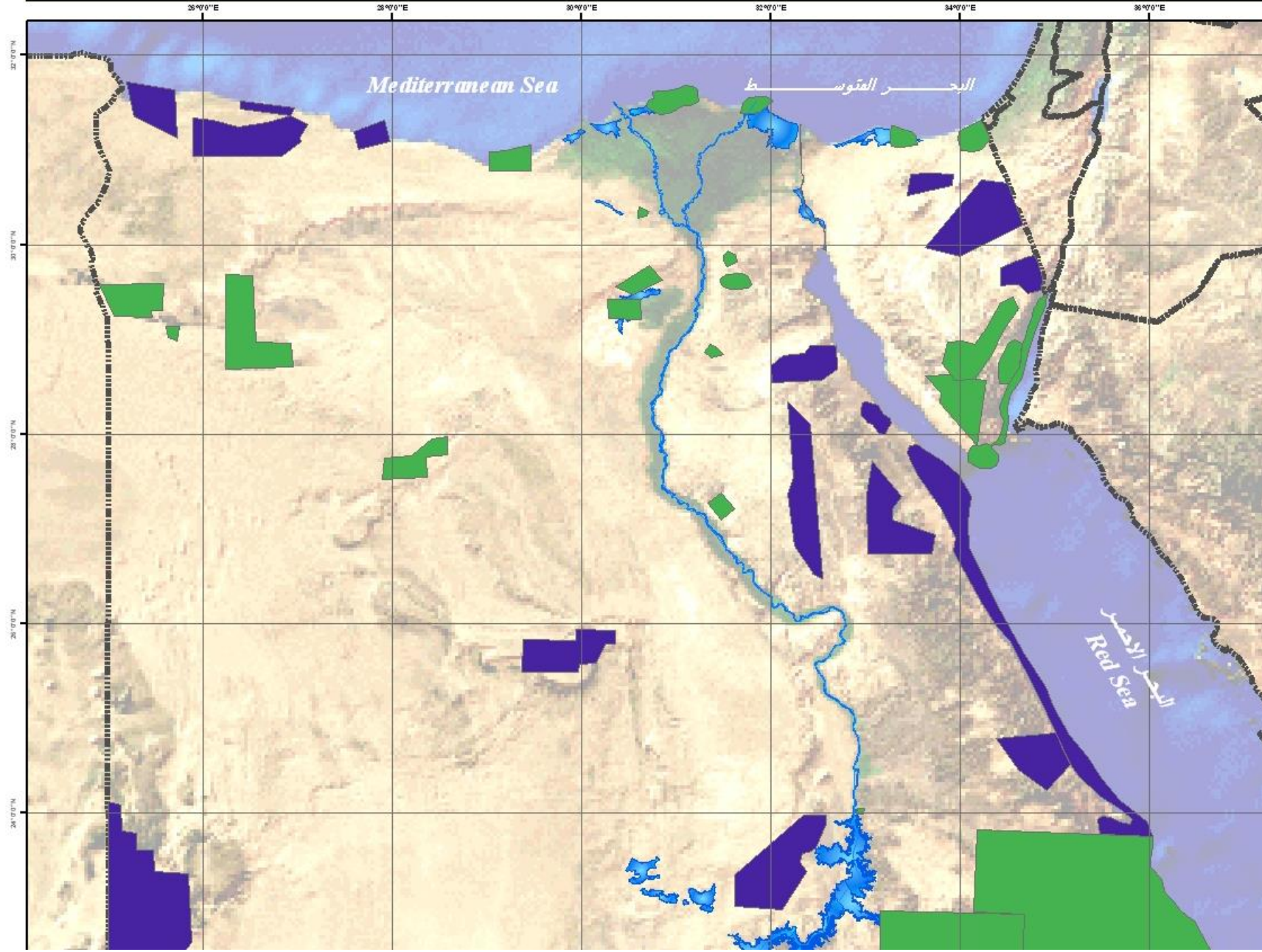
- Capital / عاصمة مملكة
- Main cities / مدن رئيسية
- Oil Fields / حقول النفط
- Gas Fields / حقول الغاز
- Oil Exploration Zones / مناطق استكشاف النفط
- International boundary / حدود دولية
- Roads Network / شبكة الطرق
- Highway / طريق سريع
- Primary road / طريق رئيسي
- Development Corridor / محور التنمية والتطوير
- Branches / فروع العنق

**Oil & Gas
And Mining
Fields**

المدن الجديدة المقترحة



المحميات الطبيعية



Legend / دليل الخريطة

Protected Areas

- Existing protectorates
- Proposed future protectorates

**Natural
Reserves**

**As Egypt has adopted a sound mining policy,
combined with all the juicy ingredients for
Success**

**Egypt will be one of the hottest exploration
area for mineral investments.**



WELCOME TO EGYPT



Federation of Egyptian Industries



Petroleum & Mining Chamber